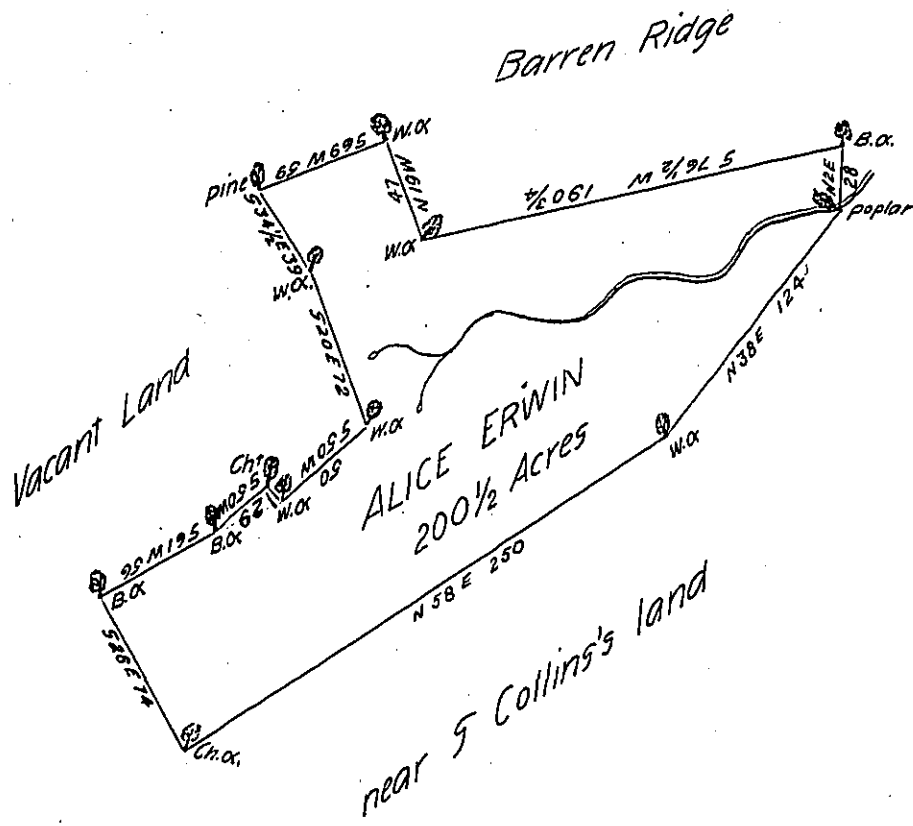


Courses & Distances

- N 19 W 47
- S 69 W 59
- S 34 1/2 E 39
- S 20 E 72
- S 50 W 50
- N 40 W 8
- S 50 W 29
- S 61 W 58
- S 28 E 74
- N 58 E 250
- N 38 E 124
- N 2 E 28
- S 76 1/2 W 190 3/4



Draught of a tract of land Situate in Fermanaugh township  
 Cumberland County Containing two hundred acres & an half & the  
 Usual allowance of Six p<sup>r</sup> Cent for roads &c<sup>a</sup>. Surveyed June the 12<sup>th</sup>  
 1785 in pursuance of an application by Alice Erwin Dated at Philad<sup>a</sup>  
 Nov<sup>r</sup> 24<sup>th</sup> 1767 N<sup>o</sup> 4604 pr

Jas Harris D.S.

John Lukens Esq<sup>r</sup>

Surveyor General

Note the above survey was begun the 21<sup>st</sup> of Oct 1782 but not  
 finished untill the date above mentioned

J. Harris D.S.

IN TESTIMONY that the above is a copy of the original remaining on file in  
 the Department of Internal Affairs of Pennsylvania, made  
 conformably to an Act of Assembly approved the 16th day of  
 February, 1833, I have hereunto set my Hand and caused  
 the Seal of said Department to be affixed at Harrisburg,  
 this thirteenth day of June 1904

*George R. Brown*  
 Secretary of Internal Affairs.